



FR ENGINECH PRIVATE LIMITED

“Garment Process Machines”

**WE FOCUS ON QUALITY,
WE CONVEY QUALITY.**



WE WORK ON TURNKEY PROJECTS

**MANUFACTURE, SUPPLIER & EXPORTER
OF GARMENT PROCESS MACHINES**

ABOUT US

Ahmedabad has been experiencing a rapid development in the Garment machinery sector from the expect of both production and export fields since 1990's.

For more than 15 years, **FR ENGIMECH PRIVATE LIMITED** has been a dynamic player in the laundry equipment industry, building a wide range of Durable Commercial Washer Extractors, Tumble Dryers and Towel Folders to meet its customers' changing needs.

Our business policy focuses on human resources and building a strong relationship between customers, employees, and the company. Our success is based on training and utilizing talented employees. We always strive to improve ourselves and our products and never compromise with quality. We play fair competitions in the market and contribute to market development.

FR Engimech Pvt Ltd. one of the leading Company in Manufacturing & Trading of all Garment Process Machinery & Processing Equipment's, with the 15 year industrial experience was started in 2007 with a Young and Dynamic Technical Team having more than a decade's experience.

We **"FR Engimech Pvt Ltd"**, are known as the prominent manufacturer, exporter and supplier of highly efficient range of Garment Process Machine like Industrial Laundry Set-up, Commercial Laundry Set-up, Residential Laundry Set-up Horizontal Washing Machine, Vertical Washing Machine, Tumbler Dryer Machine, Hydro Extractor, Dry Cleaning Machine, Washer Extractor, Calendaring/Flat Work Iron Machine, Press Table, Commercial Washing Machine, Textile Tumbler Dryer, Dhobi Machine, Laundry Washing Machine, Etc. Among our prestigious clients due to FEA. These products are designed with high precision and manufactured using quality approved components and innovative technology as per the IS standards. The offered products are widely acknowledged trues such as Robust Construction, High Performance, Hassle-free Functionality, Easy Installation And Longer Service Life. Furthermore, We offer these products to our esteemed clients in various technical specifications at affordable prices.

We have always believed that our customer is our Teacher - We never hesitate in accepting and learning from our mistakes or acknowledging the need for further improvements and this is the only factor by which our Company grew from strength to strength and rose to this leading position today.

Infrastructure:

We are backed with advanced infrastructural base that has all the required amenities. This infra structural base facilitates our adroit team members to manufacture our complete assortment as per the defined global quality norms. In addition to this, we have segregated our infrastructure into various units such as procurement, production, quality testing, R&D, marketing & sales and warehousing & packaging. All these units are operated by our highly skilled professionals, who hold rich industrial experience and knowledge. Our professionals work in close coordination in order to understand the specific requirements of clients. In our quality testing unit, we stringently inspect each and every product in compliance with the set international quality parameters in order to offer a perfect range at the clients end.

Vision:

FRE vision is to be the world leader in Garment Process Machinery & Commercial Set-up and related services. We will earn our customers' enthusiasm through continuous improvement driven by the integrity, teamwork, and innovation of FRE people.

Mission:

Our MISSION to expand and continually improve utilizing quality practices and employee involvement in Manufacturing of garment process machinery and turkey projects, that results it, customer and employee satisfaction.

Quality policy:

Owing to the priority to serve quality products, we source the products from reliable vendors that are well-reputed for the quality & precision of products. For Fuller assurance of the quality, the sourced products are checked on various quality parameters under the supervision of our quality control executives.

Our Product Ranges:

Our Manufacturing Unit in Ahmedabad, we manufacture following machines :

- Front Loading Washing Machines from 30kg to 500kg.
- Side Loading Washing Machines from 30kg to 300kg.
- Dyeing Machines side loading from 30kg to 300kg.
- Washer Extractors from 15kg to 115kg.
- Hydro Extractor from 15kg to 200kg.
- Tumble Dryers from 15kg to 250kg.
- Dry-cleaning machines from 6kg to 20kg.
- Flat Bed Press
- Flat Work Ironers from
(400 x 1600mm to 800 x 3300mm)
- Trolleys
- Tables (Vacuum Finishing, Ironing, Spotting, Mobile Table etc.)

Different Range of Garment Process Equipment and Laundry Machines





New Machine ...

“Secret of German Technology”
Coming Soon...

WET PROCESS EQUIPMENT

VERTICAL WASHING MACHINES



- These machine are used in the garments and denim with water as the medium of the wash and total electrical control panel easily operate with door opening limit for operator safety.
- Our washing machine are tasted a many times for only one result, Quality.
- Our washing machine made of stainless steel of AISI Grade 304 L .
- Before a washing machine leaves our factory, we test every tiny detail and subject it to endless stress test component in our washing machine completely meets our high standards of quality, functionality and reliability is ready, its most important challenge.
- Available with complete stainless steel inner & outer drum front door.
- Auto Timed, Auto Reverse, Auto Temperature Control, Auto Water Level Control, Electrically Operated Water & Steam Valves, Separate Motors For Wash & Extract. Ideally suited for laundry wash.
- Easy loading & unloading through large toughened glass door.

Technical Specification

Model	Capacity	Drum Volume	Drum Diameter	Drum Depth	Door Opening	Motor	Motor	Steam Inlet	Water Inlet	Drain Outlet	Heater Optional	Dimension	Approx Weight
	(Kgs)	(Ltrs.)	(mm)	(mm)	(mm)	(hp)	(kw)	(mm)	(mm)	(mm)	(kw)	(L x W x H) (mm)	(Kgs)
FRVW 30	30	400	1000	500	475	3	2.25	25	50	75	8	1325 x 1400 x 1800	600
FRVW 50	50	577	1025	700	475	5	3.75	25	50	75	8	1400 x 1225 x 1800	800
FRVW 70	75	768	1150	740	650	7.5	5.625	25	50	75	18	1450 x 1325 x 1925	1000
FRVW 100	100	1001	1225	850	650	7.5	5.625	25	50	75	18	1550 x 1450 x 1900	1100
FRVW 200	200	2120	1500	1200	800	15	11.25	40	75	125	27	1950 x 1700 x 2100	1950
FRVW 300	300	2950	1700	1300	900	20	14.92	40	75x 2 Nos	150	NA	2100 x 1950 x 2500	3000
FRVW 400	400	3562	1875	1400	1000	25	18.75	40	75x 2 Nos	150	NA	2250 x 2050 x 2600	3900
FRVW 500	500	4819	1900	1700	1000	30	22.5	40	75x 2 Nos	200	NA	2750 x 2300 x 2700	4500

WET PROCESS EQUIPMENT

● HORIZONTAL WASHING MACHINES (Single Door)



- These machine are Single Door Horizontal Washing Machines that are known for its great washing and cleaning features. It is consistently constructed with the usage of stainless steel of AISI GRADE 304 L.
- Mechanically interlocked, S.S. Loading & Unloading Doors.
- Electrical Control : Well Protected for performance Auto Timed, Auto Reverse & Auto Digital Temperature Control.
- Front display of control through Pilot Lamps, Push Buttons & Water Level Indication etc.
- Auto features like Auto Timed, Auto Reverse, Auto Temperature Controller with Inching Device.
- Single Door Side Loading Washing Machine Ideal for Small, Medium & Largest Laundries.

Technical Specification

Model	Capacity	Drum Volume	Drum Diameter	Drum Depth	Door Opening	Motor	Motor	Steam Inlet	Water Inlet	Drain Outlet	Heater Optional	Dimension	Approx Weight
	(Kgs)	(Ltrs.)	(mm)	(mm)	(mm)	(hp)	(kw)	(mm)	(mm)	(mm)	(kw)	(L x W x H) (mm)	(Kgs)
FRHW 30	30	424	775	900	400 x 350	2	1.5	25	50	75	9	1850 x 1025 x 1325	500
FRHW50	50	731	900	1150	450 x 350	3	2.25	25	50	75	18	2150 x 1200 x 1500	650
FRHW70	70	981	1000	1250	725 x 450	5	3.73	25	50	75	24	2350 x 1250 x 1350	800
FRHW 100	100	1533	1250	1250	780 x 470	7.5	5.6	25	50	75	27	2450 x 1500 x 1700	1300
FRHW 125	125	1797	1225	1525	780 x 470	7.5	5.6	25	50	75	66	2800 x 1500 x 1650	1500

WET PROCESS EQUIPMENT

HORIZONTAL WASHING MACHINES (Double & Triple Door)



- These machine are double and triple door horizontal washing machines that are known for its great washing and cleaning features. It is consistently constructed with the usage of stainless steel of AISI GRADE 304 L.
- Mechanically Interlocked, S.S. Loading & Unloading Doors.
- Electrical Control : Well Protected for performance Auto Timed, Auto Reverse & Auto Digital Temperature Control.
- Front display of control through Pilot Lamps, Push Buttons, Water Level Indication etc.
- Auto features like Auto Timed, Auto Reverse, Auto Temperature Controller with Inching Device.
- Double & Triple Door Side Loading Washing Machine Ideal for Largest Laundries.

Technical Specification

Model	Capacity	Drum Volume	Drum Diameter	Drum Depth	Door Opening	Motor	Motor	Steam Inlet	Water Inlet	Drain Outlet	Dimension	Approx Weight
	(Kgs)	(Ltrs.)	(mm)	(mm)	(mm)	(hp)	(kw)	(mm)	(mm)	(mm)	(L x W x H) (mm)	(Kgs)
FRHW 150	150	2488	1200	2200	575 x 500	10	7.5	25 x 2Nos.	75 x 2Nos.	125	3450 x 1550 x 1800	1700
FRHW 200	200	2887	1225	2450	650 x 500 x 2 Nos.	15	11.3	25x2 Nos.	75 x 2Nos.	150	3900 x 1550 x 1800	2000
FRHW 300	300	4151	1350	2900	550 x 500 x 3 Nos.	20	14.92	40x2nos.	75 x 2Nos.	150	4500 x 1600 x 1800	2500

WET PROCESS EQUIPMENT

● TUMBLE DRYERS



These are Tumble Dryers Machine and Different Type of Tumble Dryers are as Follows:

- Four Types Tumble Dryers : Steam Heater, Gas Heater, Electric Heater, Diesel Heater.
- The Special Radiators/Heat Exchanger Design and Efficient Blower System Makes The Drying Time of this FRE Dryer the Best in The Class.
- The Stainless Steel Inner Drum is Programmable on Time for Forward and Reverse Rotation.
- The Rotating Drum is called a Tumbler Through which Heated Air is Circulated to Evaporate the Moisture and Large Glass Door is Provided for Easy of Loading and Unloading Denim /Garments.

Technical Specification

Model	Capacity	Drum Volume	Drum Diameter	Drum Depth	Door Opening	Drive Motor	Exhaust Motor	Steam Inlet	Steam Outlet	Air Outlet	Heater Optional	Dimension	Approx Weight
	(Kgs)	(Ltrs.)	(mm)	(mm)	(mm)	(hp)	(hp)	(mm)	(mm)	(mm)	(kw)	(L x W x H) (mm)	(Kgs)
FRTD15	15	301	800	600	450	1	1	20	20	150 x 150	9	1250 x 1000 x 1600	350
FRTD30	30	567	950	800	450	1	1	20	20	150 x 150	24	1450 x 1100 x 1800	550
FRTD50	50	1017	1200	900	600	2	2	25	25	200 x 200	27	1550 x 1400 x 2100	800
FRTD 70	70	1368	1320	1000	700	3	2	25	25	250 x 250	36	1650 x 1520 x 2200	1150
FRTD 100	100	1900	1420	1200	800	3	3	25	25	250 x 250	40	1900 x 1620 x 2420	1400
FRTD 125	125	2237	1525	1225	900	3	3	25	25	250 x 250	27 x 2Nos	1950 x 1725 x 2420	1600
FRTD150	150	3018	1775	1220	1000	5	2 x 2 Nos	40	40	300 x 300	36 X 2 Nos	1950 x 1975 x 2800	2200
FRTD 200	200	4026	2050	1220	1000	7.5	2 x 2 Nos	40	40	250 x 2Nos	NA	1950 x 2250 x 3150	2500
FRTD250	250	5089	2300	1225	1000	7.5	2 x 2 Nos	40	40	250 x 2 Nos	NA	2000 x 2500 x 3300	2800

WET PROCESS EQUIPMENT

HYDRO EXTRACTOR



- Hydro extractor is designed to extract excess water swiftly from the yarn, Loose hank with minimum vibration & noise.
- The outer drum and inner drum are made of AISI Grade 304 L with a top discharge opening. The drum is statically & dynamically balance.
- High Capacity, Efficient and Low Power Consumption.
- Auto controlled devices, Timer and Balance protection brake.
- We offer two types of Hydro Extractor i.e. (1) Belt Driven, machine mounted on heavy duty 3 leg suspension
(2) Direct driven, drum mounted directly on the drive motor
- This is pursuable extractor completes water extraction upto 80% for Denim in around 05 minutes & up to 80% for cotton/Linen in around 05 minutes.
- The Belt Drive is a self balancing.
- The direct drive provides a quick, self balancing noiseless and vibration less performance.

Technical Specification

Model	Capacity	Drum Volume	Drum Diameter	Drum Depth	Drum Speed	Motor	Motor	G Force	Drain Size	Door Opening	Dimension	Approx Weight
	(Kgs)	(Ltrs.)	(mm)	(mm)	(RPM)	(hp)	(kw)	G	(mm)	(mm)	(L x W x H) (mm)	(Kgs)
FRHE 15	15	60	510	320	980	2	1.5	280	50	350	930 x 800 x 1150	150
FRHE 30	30	133	710	350	980	3	2.5	400	50	425	1125 x 950 x 1200	370
FRHE 50	50	258	915	400	960	5	3.5	555	75	600	1125 x 1525 x 1125	480
FRHE 50	50	209	900	350	800	7.5	4.6	320	75	600	1800 x 1575 x 1050	730
FRHE 100	100	352	1070	410	750	10	7.5	336	75	800	2100 x 1750 x 1200	1450
FRHE 150	150	380	1070	450	950	5	3.5	400	100	800	1525 x 1425 x 1100	1625
FRHE 200	200	590	1250	500	900	7.5	5.6	380	100	800	1850 x 1450 x 1200	1850

WET PROCESS EQUIPMENT

● WASHER EXTRACTORS



- **An extremely Versatile Machine (used in hotels, hospital, dry cleaners and commercial laundries)**
- The FRE Washer Extractors are characterized by their Compact, Robust design and Reliable Technology. If you are working with variable washing processes Washer Extractors can provide a fully automated procedure and near silent operation.
- Program and all parameter such as time, level, temperature, reversing or cool down can be displayed. one of many advantages of the washer extractors is that all of the process function can be manually or automatically controlled.
- The FRE Washer provides high extraction rates and robust and stable in operation for life-long reliability.

Technical Specification

Model	Capacity	Drum Volume	Drum Diameter	Drum Depth	Door Opening	Motor	Motor	Water Inlet	Drain Outlet	Heater	Max Speed	G Force	Dimension	Approx Weight
	(Kgs)	(Ltrs.)	(mm)	(mm)	(mm)	(hp)	(kw)	(mm)	(mm)	(kw)	(RPM)		(L x W x H) (mm)	(Kgs)
FRWE15	15	151	630	480	355	3	2.25	40	50	9	1050	410	965 x 1185 x 1460	850
FRWE30	30	300	840	550	525	7.5	2.62	40	75	18	870	350	1280 x 1300 x 1750	1200
FRWE45	45	450	970	600	525	7.5	2.62	40	75	27	810	350	1350 x 1400 x 1750	1650
FRWE 60	60	620	1020	750	670	15	11.25	50	100	27	780	350	1350 x 1500 x 1950	2250
FRWE 115	115	1100	1320	810	670	25	18.75	75	100	27	680	350	1900 x 2085 x 2430	2800

WET PROCESS EQUIPMENT

● SPRAY BOOTH SYSTEMS



- FRE Spray Booth Machines are available in fully Stainless Steel Construction AISI Grade 304 L.
- FRE Spray Booth comes with a High Exhaust System that can be place on the top or behind the Spray Booth.
- A new feature in our all Stainless Steel Spray Booth is Floating Tank which is used both for the operator assistance and also for remaining spray to go into the abroach tank for recycling.
- It is available in different sizes to adapt from 1 to 7 nos.

Technical Specification

Model	Capacity	Blower	Water Pump	Total Power Consumption	Air Requirement	Dimension	Approx Weight
		(hp)	(hp)	(hp)	(CFM)	(L x W x H) (mm)	(Kgs)
FRSB 03	3 Mannequins	5	1	6	21	3700 x 2400 x 2400	1200
FRSB 04	4 Mannequins	5	2	6	26	5000 x 2400 x 2400	1350
FRSB 05	5 Mannequins	7.5	3	10.5	31	6000 x 2400 x 2400	1500
FRSB 06	6 Mannequins	7.5	3	10.5	36	7000 x 2400 x 2400	1800
FRSB 07	7 Mannequins	7.5	3	10.5	40	8000 x 2400 x 2400	2000

DRY PROCESS EQUIPMENT

● CURING OVEN (ELECTRIC & GAS)



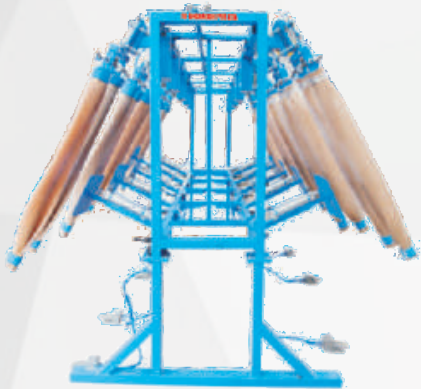
- Garment Curing Oven is used for polymerization of resin on the garments to give wrinkle free finish and also other special effects as permanent 3D whiskers on denim.
- The Curing Ovens are constructed from a powder coated heavy duty tubular frame fitted. Double wall insulated to ensure minimum heat loss with chamber available as an option.
- All curing Ovens have fan circulation and heated by sheathed in colony elements around the fan.
- A range of safety features including spark proofing, fume extraction and explosion relief are available.

Technical Specification

Model	No. of Pieces (Per batch)	Material	Machine Dimension (LxWxH)	Electric Heating (kw)	Blower (kw)	Exhaust Blower (kw)	Gas Burner	Gas Burner Capacity (kw/hr)		Approx Weight (Kgs)
								Min	Max	
FRCO 10	10 Pcs	304 SS	1170 x 1850 x 1100	12	1.5	0.25	G 5	27	58	350
FRCO 36	36 Pcs	304 SS	2920 x 2530 x 1880	24	1.5	0.55	G 5	27	58	900
FRCO60	60 Pcs	304 SS	2920 x 2530 x 1880	40	1.5	0.55	G 10	46.5	117	1500
FRCO100	100 Pcs	304 SS	3900 x 2710 x 2310	60	2.2	0.55	G 10	46.5	117	1800
FRCO120	120 Pcs	304 SS	3500 x 1960 x 2400	63	3.2	0.75	G 20	98.8	232.5	2500

DRY PROCESS EQUIPMENT

BRUSHING MANNAQUINS



Size: 5300 (L) X 2590 (W) X 2650 (H)
No. of stations : 12
Adjustable Air Pressure
Indicators for Air fill and release
Electrical Connection : 230v
This is used for Brushing and Spraying on Denim Garment
Full Pneumatic Control for easy Operation and maintenance
Quick Exhaust Valve for faster releasing

FLEXI BRUSHING ROBO

- This type of Robo can be used for both horizontal and vertical brushing effects on denim trousers. It has a uneven frame with a hinged which can be easily exchange.
- The Robo Comes with the following Features:
 - Automatic filling of air controlled by a precision switch.
 - Pneumatic air exhaust for fast release.
 - Pneumatic lifting for easy loading and unloading.
 - Automatic rotation with Pneumatic back Knee support.



3D FLEXIBLE BRUSHING ROBO



- Design to achieve better quality & Productivity in Natural 3D Effect on Denim garment.
- Cost effective , it saves labour + energy by avoiding complete pre curing process.

VACCUM FINISHING TABLE WITH BOILER



Table features:

- Strong welded Construction.
- Table Top padded with imported silicon padding.
- Low Maintenance.
- Thermostatically Controlled Stainless Steel Table Heater.
- Available Economical Spares and Services.

Table Features:

- S.S heavy duty Electrical Heaters.
- Electrical Solenoid Steam Release Safety Valve.
- S.S. Water Storage Tank.
- Fully Automatic Pressure Control, Temperature Control, Water Injuction, Dry Cut off Device, Excessive Steam Pressure Release.

Technical Features

Model	Rating	Steam Output	Steam Connection	Suitable for No. of Irons	All Dimension	Weight
FRVFT 04	04kw	4kg/hr	01	01	450 x 450 x 500	35 kg

DRY CLEANING MACHINE



- To achieve better quality & Productivity in any cleaning process for clothing and textiles.
- Our range of dry cleaning equipment are based on standard technology.
- Dry cleaning is any cleaning process for clothing and textile using a chemical solvent other than water. It is used to clean fabrics that degrade in water, and It can eliminate labor-intensive hand washing.
- A dry cleaning machines is similar to a combination of a washing machine and clothes dryer. Garments are placed in the washing or extraction chamber (referred to as the “Drum”), the Washing Chamber contains a Horizontal, Perforated Drum that rotate with outer shell.

Technical Specification

Model	Capacity	Drum Volume	Drum Diameter	Drum Depth	Number of Tanks	Tank Volume	Number of Filters	Washing Speed	Power (Steam)	Power (Electric)	Dimension	Approx Weight
	(Kgs)	(Ltrs.)	(mm)	(mm)	(mm)	(ltr)			(kw)	(kw)	(L x W x H) (mm)	(Kgs)
FRDC 06	6	85	620	280	3	57 x 57 x 58	3	38	4.9	16.5	1370 x 11029 x 1690	700
FRDC08	8	147	718	360	3	90 x 80 x 98	1	38	4.9	16.5	1700 x 1280 x 2050	850
FRDC10	10	174	718	430	3	95 x 85 x 98	1	38	6.35	16.5	1700 x 1360 x 2050	900
FRDC12	12	196	718	480	3	100 x 90 x 100	1	38	6.35	16.5	1520 x 1360 x 2110	950
FRDC16	16	292	950	400	3	134 x 134 x 164	1	38	6.35	21.35	2070 x 1450 x 2250	1200
FRDC18	18	325	950	450	3	134 x 135 x 164	1	38	8.35	21.35	2070 x 1450 x 2250	1250
FRDC20	20	360	950	500	3	146 x 135 x 164	1	38	8.35	21.35	2110 x 1550 x 2250	1300

FLAT WORK IRONERS



- The use of Three Dimensional design and Parametric simulation technology. It is used to iron such as Bed sheet, Pillow Covers, Tablecloth, Napkins etc.
- The Electric Motor installed in the flatwork ironer along with the connecting Gears, Pulleys, Sprocket and Roller Chains, Drives the Rolls and Ribbons. Keyed to the shafts of the motor and the speed reducer are pulleys and a connecting V-belt which set the speed.
- The Electrical Panel is equipped with a Digital Temperature Indicator and Digital Speed Indicator.
- This development enables us to advance our already high reputation for the manufacture of flatwork ironers that are Reliable, Economic Ton Run, Give High Production.

Technical Specification

Model	Roll	Heating	Motor	Steam Inlet	Condensate Outlet	Ironing Speed	Air Outlet	Electric Heating	Steam Consumption	Dimension	Net Weight
	(mm)		(hp)	(mm)	(mm)	(mtr/min)	(mm)	(kw)	(kgs/hr)	(L x W x H) (mm)	(Kgs)
FRFWI-0411	400 x 1600	Steam	1	15	15	1-5	150	-	35	2100 x 1150 x 1050	1000
FRFWI-0412	400 x 1600	Electrical	1	-	-	1-5	150	24	-	2100 x 1150 x 1050	1000
FRFWI-0413	400 x 2000	Steam	1	15	15	1-5	150	-	40	2500 x 1250 x 1000	1200
FRFWI-0414	400 x 2000	Electrical	1	-	-	1-5	150	24	-	2500 x 1250 x 1000	1200
FRFWI-0415	400 x 3000	Steam	1	15	15	1-5	205	-	45	3500 x 1250 x 1000	1800
FRFWI-0416	400 x 3000	Electrical	1	-	-	1-5	205	24	-	3500 x 1250 x 1000	1800
FRFWI-0417	600 x 2000	Steam	1.5	30	30	1-8	205	-	45	2850 x 1400 x 1220	1800
FRFWI-0418	600 x 2000	Electrical	1.5	-	-	1-8	205	36	-	2850 x 1400 x 1220	1800
FRFWI-0419	600 x 3000	Steam	2	30	30	1-8	205	-	50	4080 x 1640 x 1240	2500
FRFWI-0420	800 x 3000	Steam	3	30	30	1-10	205	-	80	4150 x 1890 x 1390	3000
FRFWI-0421	800 x 3300(2R)	Steam	5	140	30	2-20	410	-	160	4150 x 3800 x 1390	4900

ACID WASHING MACHINE



- During Acid Wash, Bleach is used. By the action of Bleach, Irregular fading affect is developed on the Heavy Garment like Denims, Thick Canvas/ Twill and Sweater.
- The Bleach act a brushing action on the Garment Fabric Surface.
- The area where more brushing action takes place there more discolor or fading affects is developed and the area where less brushing action takes place less brushing action and takes place less fading affect will be developed.
- The multi layer fabric areas like – Collar, Calf, Pocket, Placket, Side Seam etc. areas will be brushed more than the single layer areas.
- Thus in this way fading affect may be developed on the garment by acid wash technique.

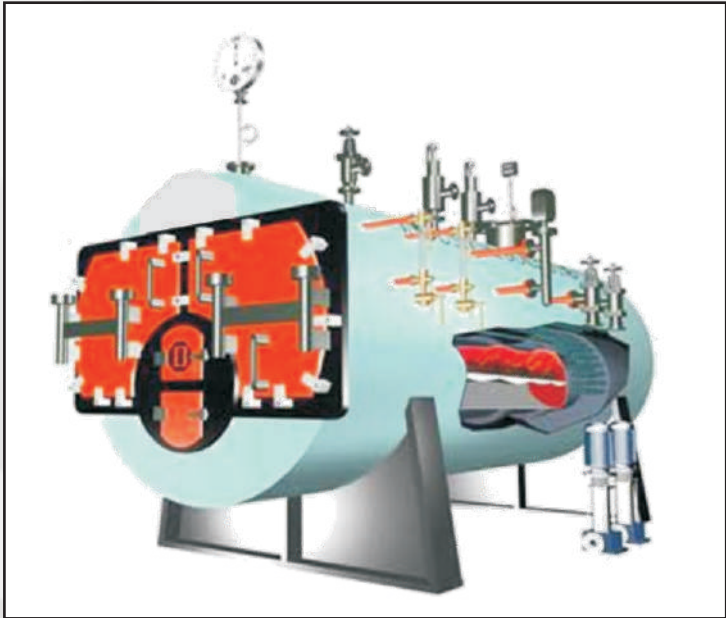
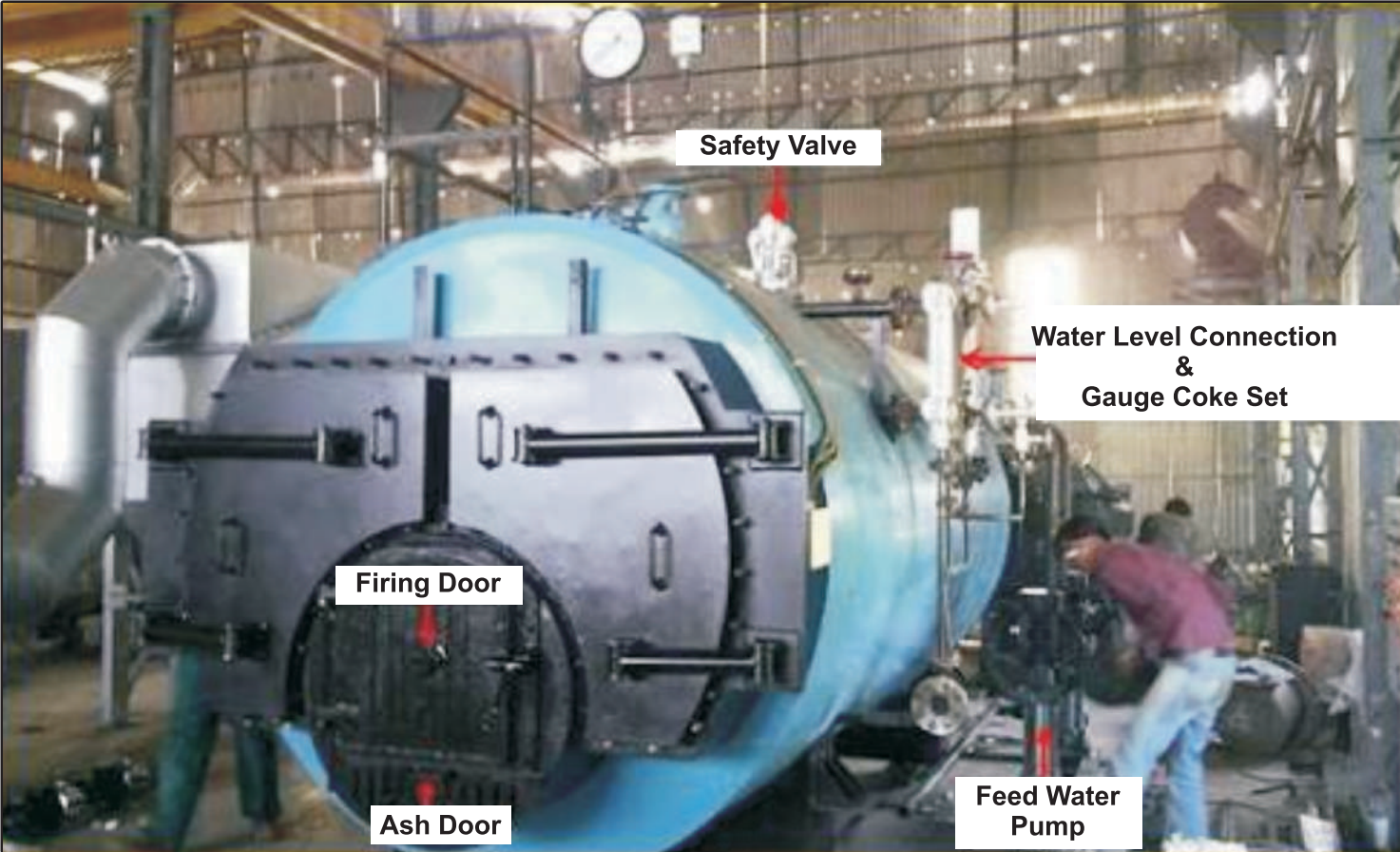
Object of acid wash:

- To produce irregular fading effect or chronic looking effect.
- For soft feeling to wear the garment i.e. to improve softness.
- To achieve the buyer washing standard.
- To increase rubbing fastness.

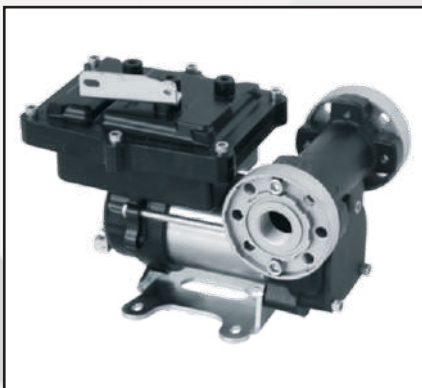
Technical Specification

Model	Capacity	Drum Volume	Drum Diameter	Drum Depth	Drum Speed	Motor	Motor	Gear Center	Door Opening	Dimension	Approx Weight
	(Kgs)	(Ltrs.)	(mm)	(mm)	(RPM)	(HP)	(KW)	Inch	(mm)	(L x W x H) (mm)	(Kgs)
FRAW30	30	1533	1250	1250	36	2	1.5	2.5	400 x 600	2450 x 1250 x 1290	300
FRAW50	50	1902	1250	1550	36	2	1.5	2.5	400 x 600	2750 x 1250 x 1290	450
FRAW70	70	3490	1550	1850	36	3	2.3	3	450 x 700	3050 x 1550 x 1590	600
FRAW100	100	3962	1550	2100	36	5	3.8	3	450 x 700	3300 x 1550 x 1590	800
FRAW150	150	4717	1550	2500	36	5	3.8	4	450 x 700 x 2Nos	3700 x 1550 x1590	1000

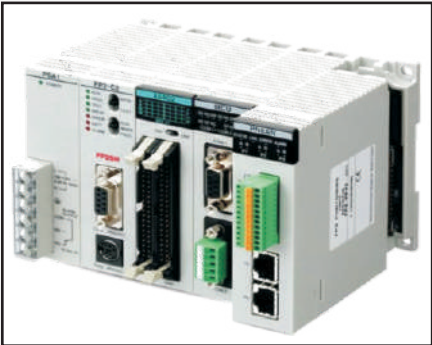
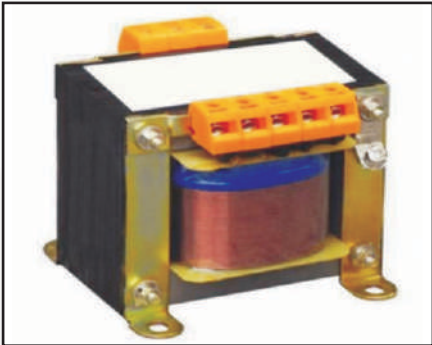
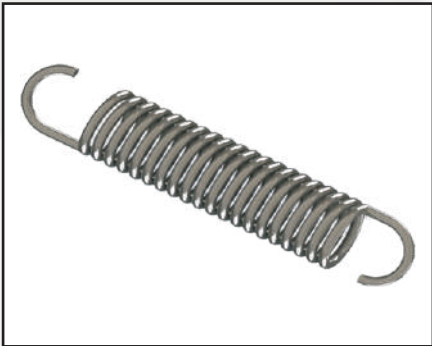
STEAM BOILER (TR)



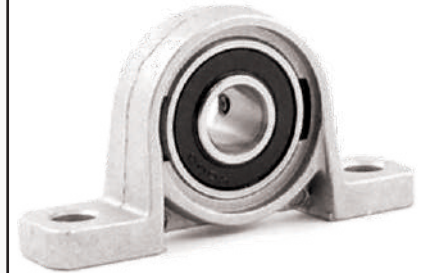
FRE GRNUINE SPARE PARTS



FRE GRNUINE SPARE PARTS



FRE GRNUINE SPARE PARTS





FR ENGIMECH PRIVATE LIMITED

"Garment Process Machines"

📍 261/2, Godown No : 06, Nr. Shivshakti Estate, Prestige Hotel Gali, Narol Highway Road,
Narol, Ahmedabad - 382405. Gujarat (INDIA).

☎ +91 99786 77912/11

✉ frengimech1984@gmail.com | info@frengimech.in

🌐 www.frengimech.in

